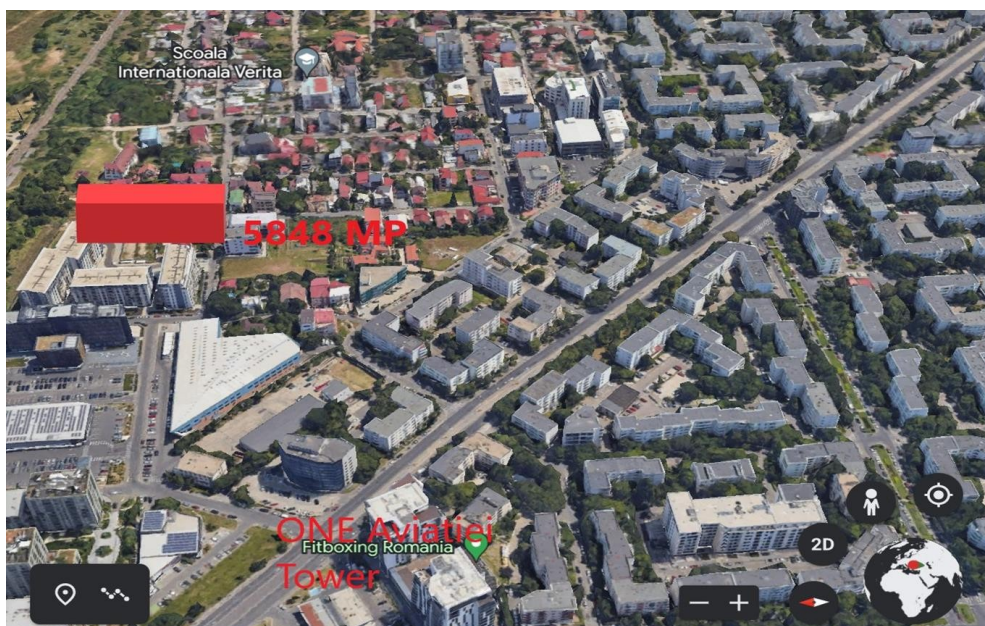


## Aviatiei

## Land for Sale

### CARACTERISTICS

- ▶ **AREA:** Aviatiei
- ▶ **Land Surface:** 5848 sqm
- ▶ **POT:** 45
- ▶ **CUT:** 1.56
- ▶ **End-use:** Rezidential



### DESCRIPTION

Land for sale in Bucharest, Aviatiei area, near Lidl Alexandru Serbanescu, at only a few minutes distance from Promenada Mall and Herastrau Park, benefiting from easy access to all main roads.

**SURFACE:** 5,848 sqm

**USES:** All utilities

**LEGAL SITUATION:** Land owned by a legal entity.

**Urban information:**

**CUT** 1.56

**H max** G+2F

**POT** 45%

750 EUR sqm + VAT

0.01 BITCOIN sqm + VAT

0.34 ETHEREUM sqm + VAT