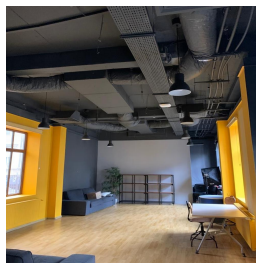


Romana Square

Offices for Sale

CARACTERISTICS

- ▶ **AREA:** Romana Square
- ▶ **Usable surface:** 2850 sqm
- ▶ **Built surface:** 3488 sqm
- ▶ **Land Surface:** 1240 sqm
- ▶ **Parking places:** 32
- ▶ **Maximum height:** S+P+5E



DESCRIPTION

The building is situated very close to Romana Square and has easy access to all means of transportation, including the subway which is at only 5 minutes distance.

Facilities:

- open space/ level and partition;
- natural light on all sides;
- sanitary group and arranged kitchen;
- air conditioning;
- 2 elevators;
- underground parking places - 32 parking places;
- 2 additional buildings

3,950,000 EUR + VAT

65.98 BITCOIN + VAT

1,457.03 ETHEREUM + VAT