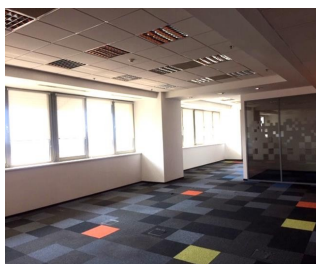
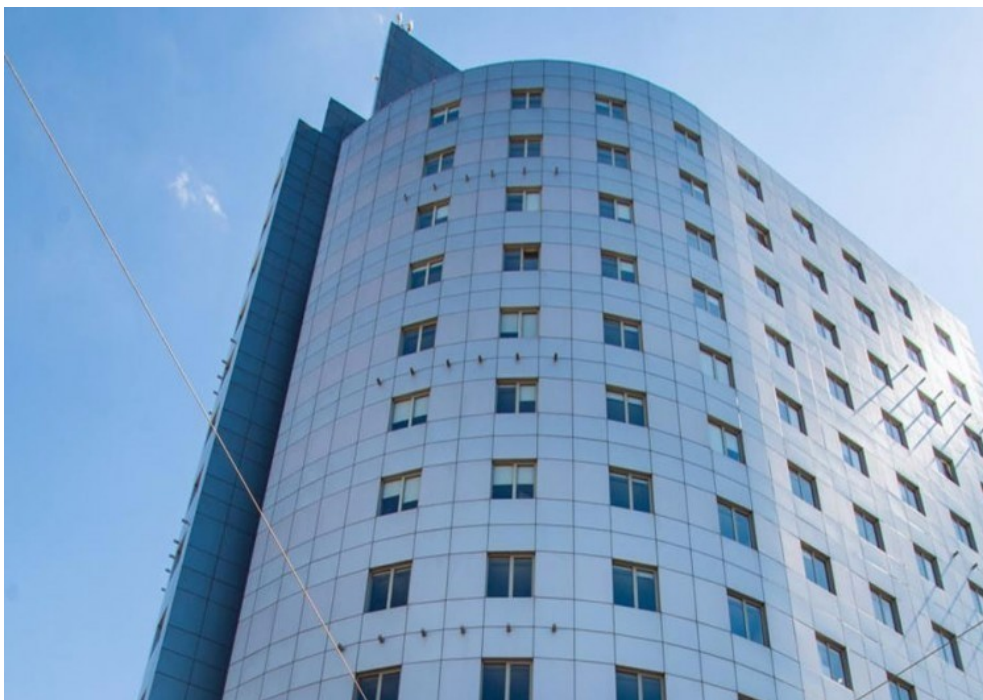


## Calea Victoriei

### CARACTERISTICS

- ▶ **AREA:** Calea Victoriei
- ▶ **Usable surface:** 12.078 sqm
- ▶ **Floor:** Et.7, Et.14
- ▶ **Maximum height:** S+P+14



### Layout

Total usable area: 12,078 sqm

7th floor: 380 sqm

14th floor: 454 sqm

Parking place/ month: 150 Euro

Maintenance: 4 Euro/sqm/month + VAT

### FINISHES/EQUIPMENT

- ▶ **Others:** Security, AC, Elevator, Internet and Voice Connection , TV Cable, Sandstone, Faience, Insulated Windows

### DESCRIPTION

Office spaces for rent situated very close to Victoriei Square, ultracentral, at only a few minutes distance from the subway station, Government Palace and many bank offices.

Facilities:

false ceiling

HVAC air conditioning system

reception

60 parking place

raised floor

BMS system

16 EUR sqm + VAT