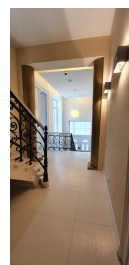
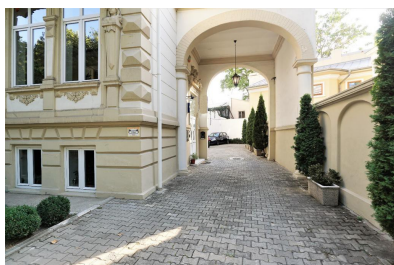


Lascar Catargiu

CARACTERISTICS

- ▶ **AREA:** Lascar Catargiu
- ▶ **Usable surface:** 402.73 sqm
- ▶ **Parking places:** 5
- ▶ **Maximum height:** D + P + E + M



Layout

Semi-basement: 89.68 sqm

Ground floor: 100.24 sqm

1st Floor: 108.62 sqm

Attic: 104.19 sqm

DESCRIPTION

The building is located close to Romana Square, one of the most exquisite area from Bucharest, at only a few minutes away from Victoriei Square or Calea Dorobanti. Exceptional position and easy access to public transportation.

Courtyard 150 m²

Property renovated in very good condition with spacious rooms benefiting from natural light.

Facilities:

- Equipped toilets and kitchenette

- air conditioning

- PC and phone network

- Parquet, carpet

- PVC joinery

- Parking spaces: 5

The property is well located and the means of transportation is nearby.

In close proximity are the subway stations Victoriei Square and Romana Square.

8,000 EUR + VAT

0.13 BITCOIN + VAT

2.81 ETHEREUM + VAT

REGATTA® - Leader of Romanian Real Estate Brands

Phone: 021.232.90.12, 021.232.90.88 /// E-mail: office@regatta.ro

*Receiving this presentation represents your agreement that any negotiation regarding this property to take place through the agency of a Regatta rep