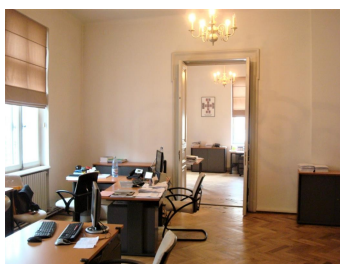


Carol I Blvd

CARACTERISTICS

- ▶ **AREA:** Carol I Blvd
- ▶ **Usable surface:** 163 sqm
- ▶ **Floor:** 2
- ▶ **Maximum height:** D+P+2E+M



DESCRIPTION

Situated at only a few minutes distance from Universitatii Square, the building benefits of an exceptional location with great exposure, in the middle of Bucharest. The special location offers easy access to all the important point of interest in the city and from all means of transportation.

Facilities:

4 offices + kitchenette + wash room

central heating

air conditioning

parquet and ceramic tiles

separated entrance

parking plots available for rent in the underground parking at Universitatii Square

2,250 EUR

0.04 BITCOIN

0.83 ETHEREUM