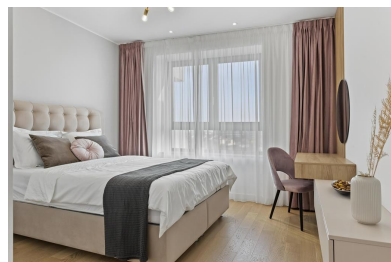
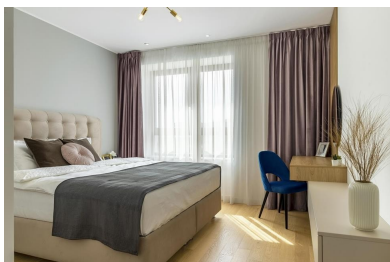
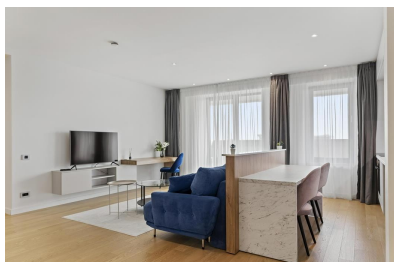


Aviatiei

2 rooms

CARACTERISTICS

- ▶ **AREA:** Aviatiei
- ▶ **Usable surface:** 645.45 sqm
- ▶ **No. of Bedrooms:** 1
- ▶ **No. of Rooms:** 2
- ▶ **No. of Bathrooms:** 1
- ▶ **Parking places:** 11
- ▶ **Construction year:** 2022
- ▶ **Balconies :** 1



Layout

That brand new building is situated in Northern area the most desirable area in Bucharest. Due to its location the property benefits of easy access to all the important point of interest in the city and from the northern side: Promenada Mall, Baneasa Shopping City, Otopeni International Airport Henri Coanda and the business center Floreasca - Aviatiei- Pipera.

The 8 apartments are disposed:

2nd Floor: 2 rooms apartment - surface 79.13 sqm;

3rd Floor: 2 room apartment - surface 79.34 sqm;

6th Floor: 2 room apartment - surface 79.34 sqm;

7th Floor: 2 room apartment - surface 79.13 sqm;

8th Floor: 2 room apartment - surface 85.02 sqm;

10th Floor: 3 apartment/ 2 room each apartment with surfaces of 79.13 sqm, 79.34 sqm, 85.02 sqm

8 parking places in the underground and 3 parking floors above ground;

1,850,000 EUR + VAT

18.82 BITCOIN + VAT

605.43 ETHEREUM + VAT