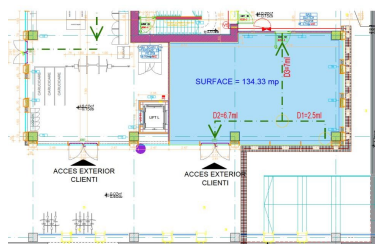


## Calea Serban Voda

## Commercial Spaces for Rent

### CARACTERISTICS

- ▶ **AREA:** Calea Serban Voda
- ▶ **Usable surface:** 134.33 sqm
- ▶ **Floor:** P
- ▶ **Construction year:** 2020
- ▶ **Maximum height:** 2S+P+7E



### DESCRIPTION

Office building situated very close to Tineretului subway station, with a beautiful park view at only 1 station distance to Unirii Square.

Facilities:

- false ceiling
- BMS
- usable height 2.80 m
- HVAC 4 pipes;
- voice and PC network;
- high speed and high capacity elevators;
- raised floor;
- fire detection and prevention system

1st phase of construction:

Letttable area: 30,450 sqm

Available area: 134.33 sqm + 12 sqm terrace

Terrace: 12 Euro/sqm/month + VAT

Maintenance: 3.75 Euro/sqm/month + VAT

Parking place: 100 €/loc/luna + TVA

25 EUR sqm

0.01 ETHEREUM sqm