

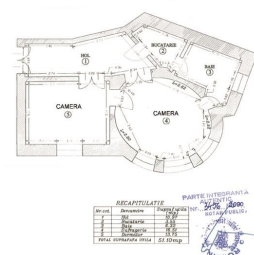
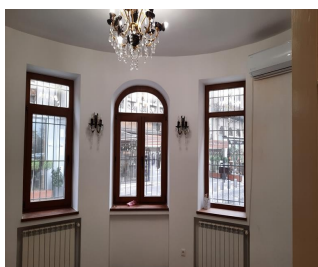
Calea Victoriei

Commercial Spaces for Rent

2 rooms

CARACTERISTICS

- ▶ **AREA:** Calea Victoriei
- ▶ **Usable surface:** 51 sqm
- ▶ **No. of Rooms:** 2
- ▶ **No. of Bathrooms:** 1



DESCRIPTION

The apartment is situated on the ground floor of a building in Romanian Athenaeum area, close to Intercontinental Athenaeum Palace Hotel, having large windows, with view to Caju Restaurant.

The apartment is divided in 2 rooms 1 kitchen, 1 bathroom, 1 hall;

Facilities:

all utilities

street oriented windows;

cannot be used for public food

The apartment is perfectly suitable both for commercial activities which doesn't need a presence of many people or for office.

Available immediately.

2,000 EUR

0.02 BITCOIN

1 ETHEREUM