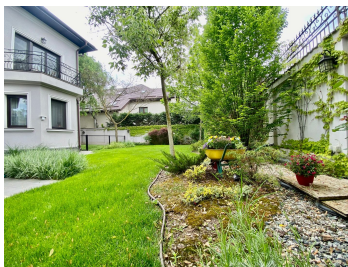
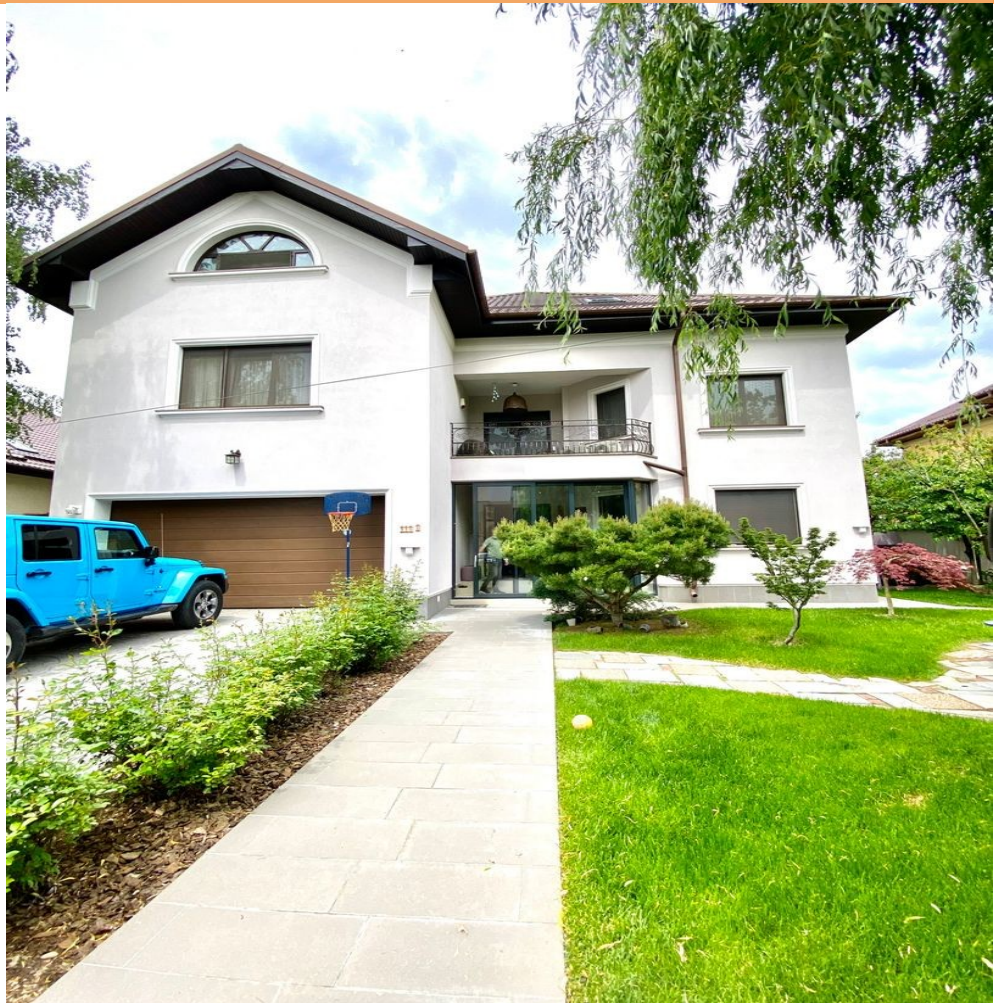


Baneasa

House for Rent

CARACTERISTICS

- ▶ **AREA:** Baneasa
- ▶ **Usable surface:** 531 sqm
- ▶ **Built surface:** 626 sqm
- ▶ **Land Surface:** 1000 sqm
- ▶ **No. of Bedrooms:** 4
- ▶ **No. of Rooms:** 7
- ▶ **No. of Bathrooms:** 4
- ▶ **Parking places:** 3
- ▶ **Construction year:** 2005



FINISHES/EQUIPMENT

- ▶ **Furniture:** Partial Furnished
- ▶ **Others:** AC, Heating System, Faience, Sandstone, Parquet, Garage, Insulated Windows , Sistem de irigatie, Storage rooms

DESCRIPTION

We propose to rent a superb villa near the forest in Baneasa DN1 area, sector 1.

The villa has a special architecture, which fits harmoniously into the urban landscape through simplicity, comfort, durable and sustainable principles, premium finishes, special interior design elements. It has its own garden and benefits from smart partitions, generous and bright rooms, high and premium finishes. It is sold fully furnished and equipped according to the presentation pictures.

On the ground floor there is the closed kitchen with dining area, a generous living room and access to the terrace from the courtyard. The interior staircase leads to the first floor where there is a rest area that has 3 bedrooms with dressing rooms and bathrooms and access to a terrace.

Also, the generous attic offers an open area, ideal for hobby or playground, with bathroom equipped with wet sauna and a bedroom for oapeti.

The yard is arranged with lawn, with a playground and a beautiful tree house.

This property represents an excellent opportunity for those who are looking for a luxury home, in a special location and with access to all the important facilities, the villa being located near the prestigious private schools in the north of Bucharest, with easy access to airports and just a few steps from Baneasa Mall. In addition, Baneasa forest is located at a distance of 2-3 minutes, offering the opportunity to enjoy nature and fresh air.

4,500 EUR

0.07 BITCOIN

2.34 ETHEREUM