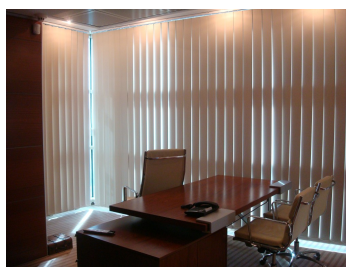


Victoriei

Offices for Rent

CARACTERISTICS

- ▶ **AREA:** Victoriei
- ▶ **Usable surface:** 160 sqm
- ▶ **Floor:** Et.6
- ▶ **Maximum height:** S+P+7E



DESCRIPTION

The spaces offered for rent are situated very close to Victoriei Square and Romanian Government, at only a few minutes away from Aviatorilor Boulevard.

Facilities:

- modern amenities
- parquet, carpet
- air conditioned
- reception, security

- panoramic elevator

Available areas:

6th Floor: 170 sqm

Rental prices:

13 Euro/sqm/month + VAT - 6th floor

3 Euro/sqm/month + VAT- Maintenance

13 EUR sqm + VAT