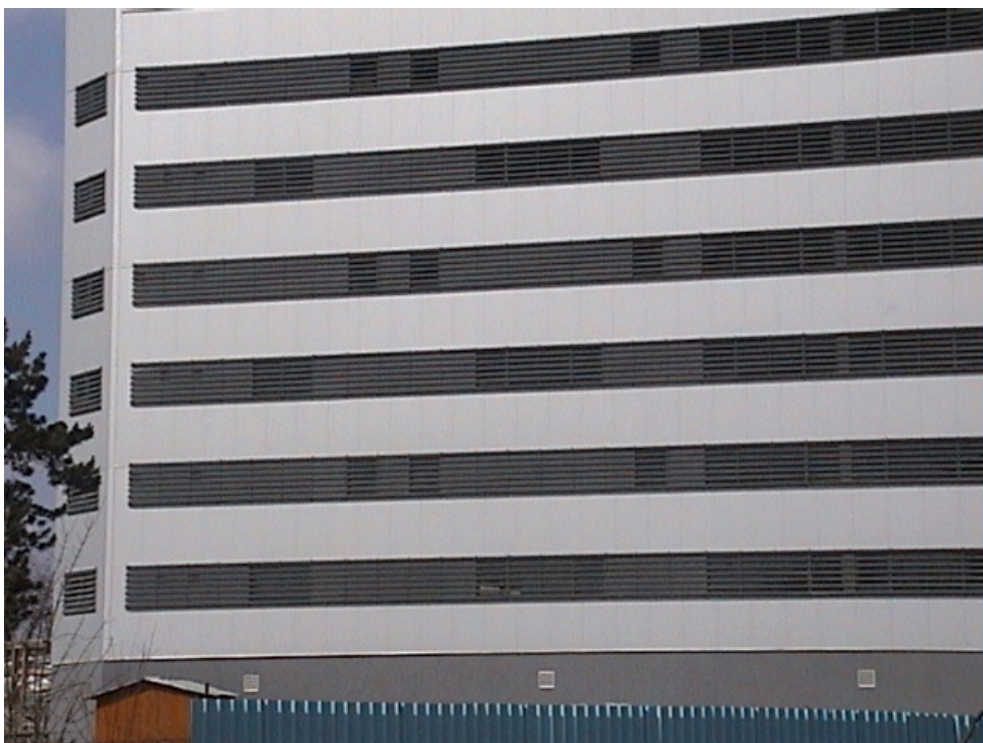


## Baneasa

## Offices for Rent

### CARACTERISTICS

- ▶ **AREA:** Baneasa
- ▶ **Usable surface:** 290.2 sqm
- ▶ **Floor:** E4; E5;
- ▶ **Construction year:** 2003
- ▶ **Maximum height:** P+7E
- ▶ **Subdivision:** open space



### DESCRIPTION

The building is situated in the northern area of Bucharest, close to Herastrau Park and Antena 1.

#### Facilities:

- open-space + sanitary group / level
- modern elevator
- carpet, faience, grit stone
- own heating
- air conditioning
- conference room
- security, reception

- 2003 building

8 EUR sqm + VAT