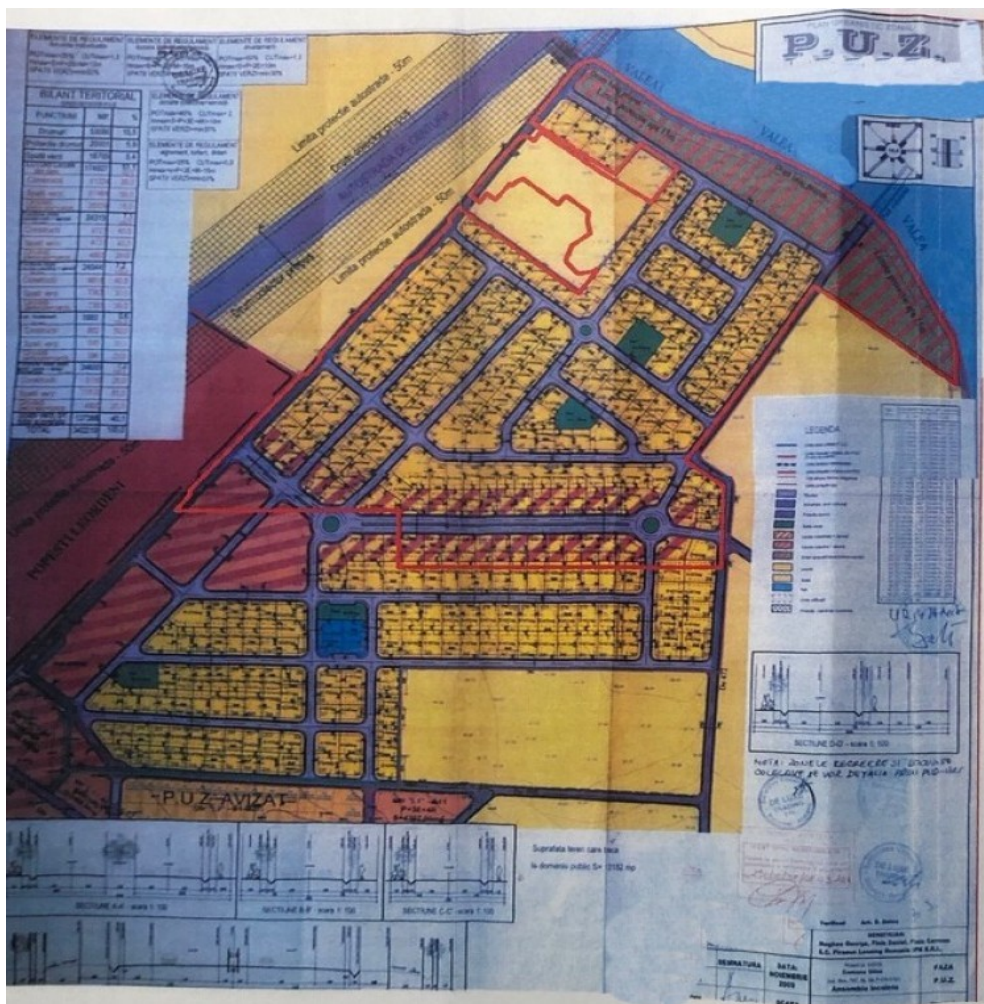


## Ring Road

## Land for Sale

### CARACTERISTICS

- **AREA:** Ring Road
- **Usable surface:** 100000 sqm
- **POT:** 40-60%
- **End-use:** Rezidential



### DESCRIPTION

The residential land plot is situated in Eastern side of Bucharest, very close to A0, and A2 Highway Bucuresti - Constanta and at only 2.5 km distance from DN4. The access is easy both from the old ring road and to the new one with roundabout at the crossroad with DN4. The PUZ was approved for logistic and services development.

The street were is located the land plot was partially arranged being under construction.

Land plot: 100,000 sqm

POT: 40-60 %

Utilities for the land plot: electricity, capacity 700Kw

The property: individual;