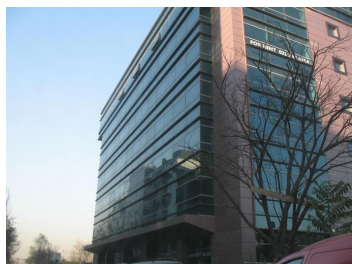


Pipera

CARACTERISTICS

- ▶ **AREA:** Pipera
- ▶ **Usable surface:** 844 sqm
- ▶ **Floor:** Et. 5, Et.2
- ▶ **Maximum height:** 2S+P+6E+Et. tehnic



FINISHES/EQUIPMENT

- ▶ **Others:** Fire Protection, Internet and Voice Connection

DESCRIPTION

Office building for rent situated in Northern area of Bucharest very close to Dimitrie Pompeiu and at only a few minutes distance from Pipera subway station.

Facilities:

carpet, ceramic tiles

raides floor;

security 24/7;

kitchenette and sanitary group;

PC wiring/ server room;

parking places in the underground;

Maintenance: 3,9 €/sqm/month + VAT

10 EUR sqm + VAT