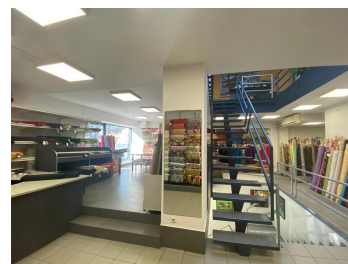
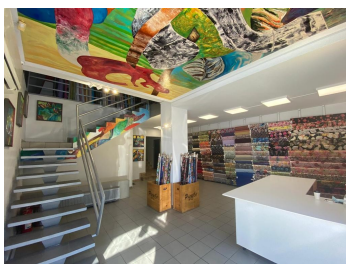
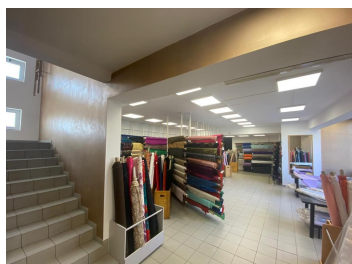


## Pache Protopopescu

## Commercial Spaces for Rent

### CARACTERISTICS

- ▶ **AREA:** Pache Protopopescu
- ▶ **Usable surface:** 567 sqm
- ▶ **Built surface:** 795 sqm
- ▶ **Land Surface:** 288 sqm
- ▶ **Maximum height:** S+P+ E1+ M



### DESCRIPTION

The building offered for rent is situated in the center of Bucharest, benefiting of good visibility, good car and pedestrian traffic.

Facilities:

- own central heating;
- arranged sanitary groups;
- false ceiling;
- 2 staircases;

Perfect suitable for shop, medical center, bank office, after school.

Total usable area: 566.9 sqm

Basement: 107.37 sqm

Ground floor: 133.31 sqm

1st Floor: 168.94 sqm

Attic: 158.27 sqm (4 offices, kitchen, 2 sanitary groups, hall, staircase and terrace of 5.46 sqm)

There are 2 buildings, one built in 1998 and another in 2002.

6,500 EUR

0.07 BITCOIN

2.14 ETHEREUM