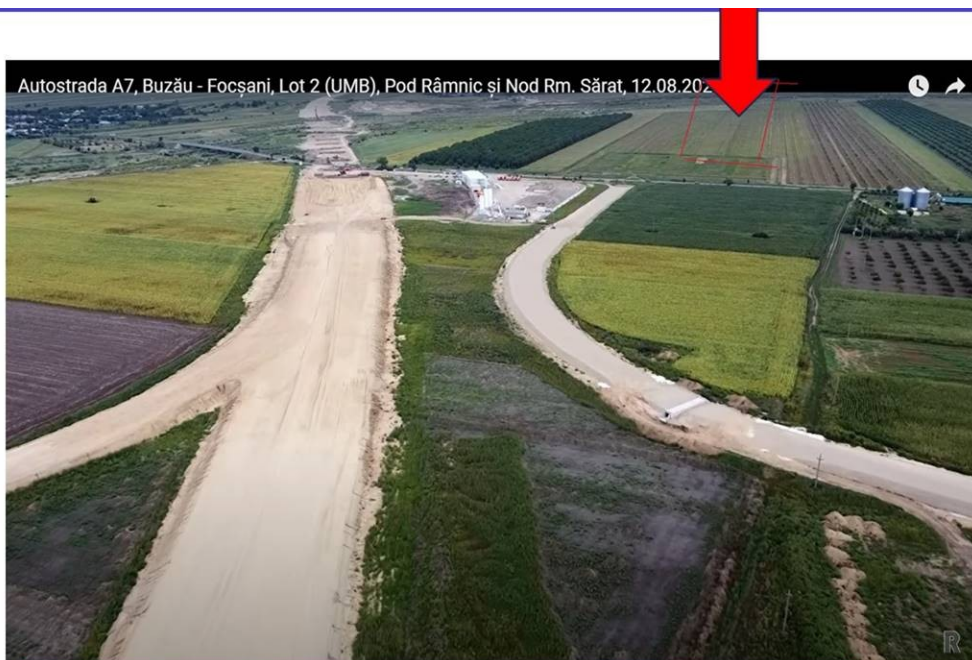


Ramnicu Sarat

Land for Sale

CARACTERISTICS

- ▶ **AREA:** Ramnicu Sarat
- ▶ **Land Surface:** 98806 sqm
- ▶ **End-use:** Rezidential



DESCRIPTION

The property offered for sale is situated at aprox 350 m far from the A7 highway junction and at approx. 600 m far from Râmnicu Sărat city. The A7 highway, as planned by authorities, will be ready in 2024 for Râmnicu Sărat area.

The national road DN2 – E85 crosses the city and links it at south to Buzău, Ploiești and Bucharest, and at north to some Moldovian cities: Focșani, Bacău, Roman, and Suceava.

150 km from Bucharest

120 km from International Airport Otopeni

35 km from Buzău

39 km from Focșani

Râmnicu Sărat has railway system (both for persons and for cargo).

The city has one of the oldest train station in Romania, being part of the National Heritage.

Opportunity Moldavia Highway (A7) – road junction (connection point) in Râmnicu Sărat area:

Râmnicu Sărat area will become a multi-industry Hub.

Râmnicu Sărat area will support the manufacturing and distribution of goods, via A7 highway/railway to Ukraine.

Râmnicu Sărat area is directly connected to:

- Braila – 82 km

- Galati – 98 km

- Constanta Port – 232 km

Râmnicu Sărat has agri-business facilities; will develop processing facilities for food and storage facilities (for cereals and vegetables).

The property has 98.806 sqm and is suitable for a mix used development: services, manufacturing, logistics and green energy production facilities;