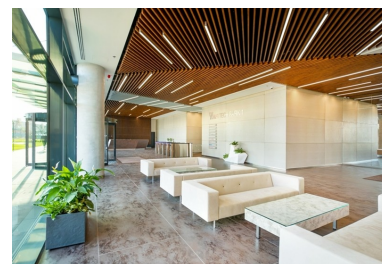


13 Septembrie

## CARACTERISTICS

- ▶ **AREA:** 13 Septembrie
- ▶ **Usable surface:** 1800 sqm
- ▶ **Parking places:** Da
- ▶ **Floor:** Et. 6
- ▶ **Maximum height:** 2S+P+8E



## Layout

Total area: 33,000 sqm

Rentable area: 20,000 sqm

Availabel area/ floor: 600 - 1.800 sqm

Rental prices: 12.5 Euro/ sqm/month + VAT

Maintenance: 3.5 Euro/ sqm/ month + VAT

## FINISHES/EQUIPMENT

- ▶ **Others:** Fire Protection, Alarm system, Elevator, TV Cable, Internet and Voice Connection

## DESCRIPTION

Afi Tech Park is an office building situated close to Palatul Parlamentului and to Hotel Marriott, benefiting of an easy access to all means of transportation.

Facilities:

green building

HVAC

PC and phone network

Glass curtain wall with sun protection

BMS

raised floor  
CCTV  
8 elevators  
Parking places  
Cafeteria, restaurant, interior courtyard  
Bicycle parking with all the facilities (showers, lockers)

**12.50 EUR sqm + VAT**