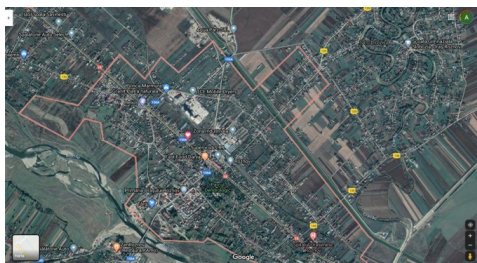


## Roznov

### CARACTERISTICS

- ▶ **AREA:** Roznov
- ▶ **Usable surface:** 959 sqm
- ▶ **Built surface:** 1018 sqm
- ▶ **Land Surface:** 2430 sqm
- ▶ **Parking places:** 20
- ▶ **Construction year:** 2022
- ▶ **Maximum height:** P



### DESCRIPTION

The retail park in Roznov was built in 2022 and the opening took place in September 2022.

It is built as a single-storey reinforced concrete structure faced with facade panels and a glazed front facade. Entrances to the commercial units are made via automatic doors from a shared parking lot that is in front of the building. The retail park is linked to the existing Penny supermarket.

Rentable area (GLA)

500 sqm - phase 1

TOTAL = 959 sqm

Plot area: 2.430 sqm (Total built-up area is 1.018 sqm)

Parking lots: 20

Opening: 09.2022 – phase 1

1 Anchor Tenant: (PEPCO)

Occupancy rate: 100% since opening

The Retail Park is leased to a single international tenant whose goods offer is also complemented with a modern Penny supermarket situated right next to the our building.

Indexation:

HCPI in all rent contracts