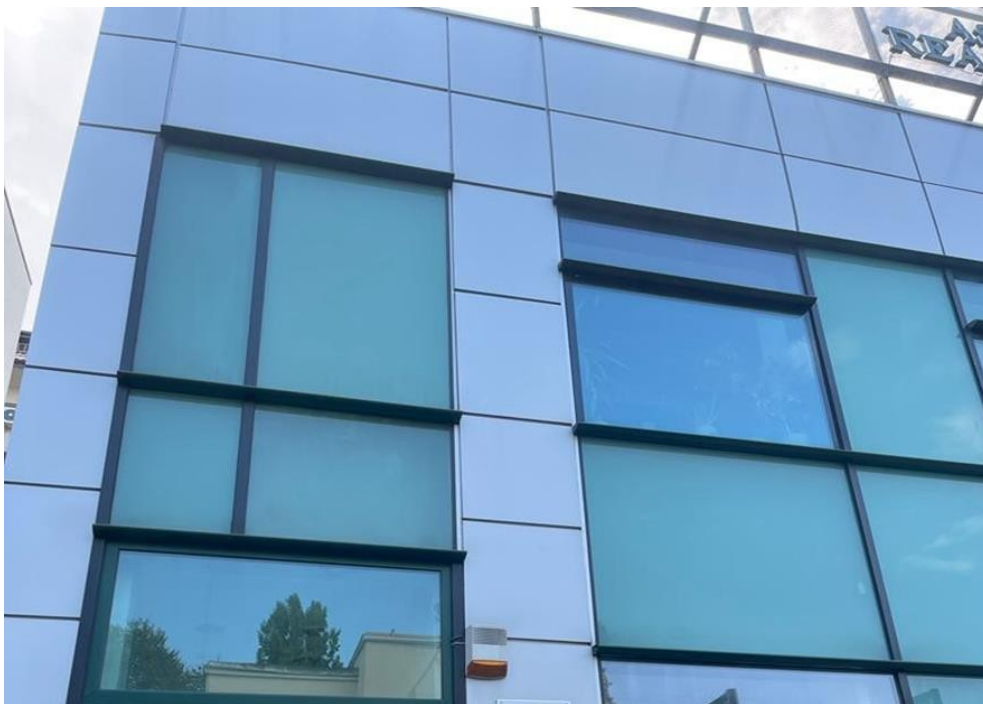


## Calea Dorobantilor

### CARACTERISTICS

- ▶ **AREA:** Calea Dorobantilor
- ▶ **Built surface:** 350 sqm
- ▶ **Land Surface:** 291 sqm
- ▶ **Maximum height:** S+P+E+M



### DESCRIPTION

The office building is situated at only a few minutes distance from Calea Dorobanti and Dorobanti Square.

Semi-basement: 2 storage spaces;

Ground floor: 5 rooms + bathroom;

1st Floor: open spaces + bathroom + terraces;

Attic: 3 rooms;

**6,000 EUR + VAT**

**0.07 BITCOIN + VAT**

**2.78 ETHEREUM + VAT**