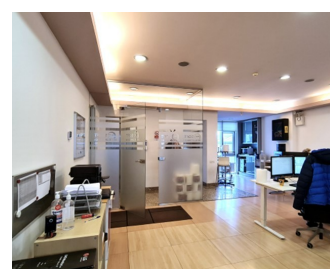
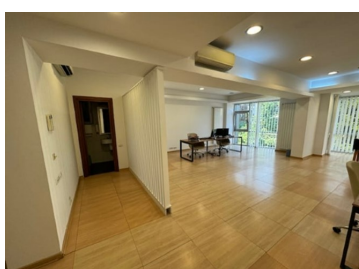
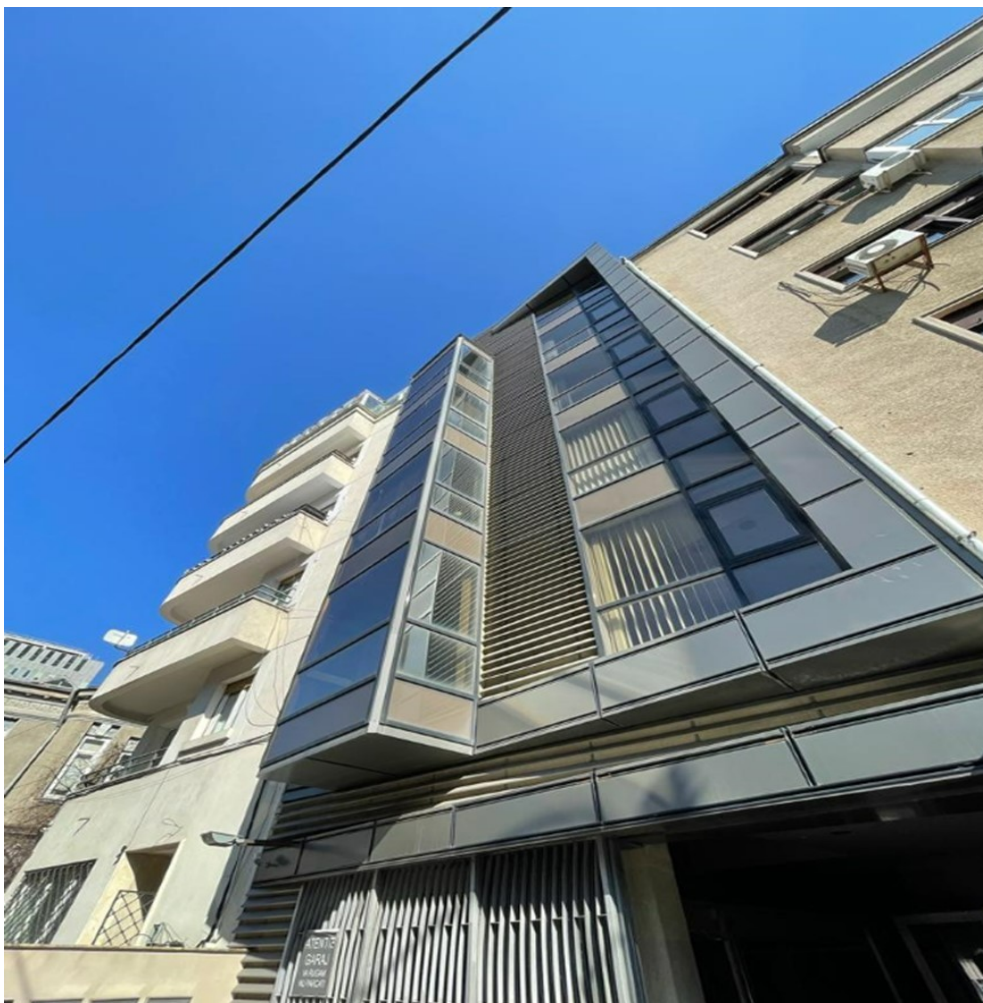


## Iancu de Hunedoara

### CARACTERISTICS

- ▶ **AREA:** Iancu de Hunedoara
- ▶ **Usable surface:** 320 sqm
- ▶ **Floor:** Et.2, Et. 4
- ▶ **Maximum height:** S+P+7E



### Layout

Rental price: Euro 2,300 / month/ floor

### FINISHES/EQUIPMENT

- ▶ **Others:** AC, Elevator, Heating System, Internet and Voice Connection , Insulated Windows

### DESCRIPTION

The office building is situated very close to Victoriei Square and also to Dorobanti Avenue, benefiting of great easy access to all means of transportation and to all the important point of interest in the city.

Facilities:

- air conditioning;
- alarm system;
- own central heating;
- PC and phone network;

elevator;  
security;

2,300 EUR

0.03 BITCOIN

0.91 ETHEREUM