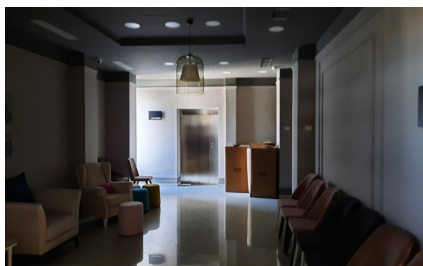


## Pipera

## Commercial Spaces for Rent

### CARACTERISTICS

- ▶ **AREA:** Pipera
- ▶ **Usable surface:** 1000 sqm



### Layout

The floors can be rented separately or together;

Ground floor - 3,500 Euro/ month

1st Floor - 3,000 Euro/ month

2nd Floor - 2,750 Euro/ month

Basement - 500 Euro/ month

### DESCRIPTION

The commercial space is located in the North area of the capital on Pipera Boulevard, benefiting from car traffic and a very good visibility. The spaces are open space type, being located on the ground floor—250 sqm, 1— floor 500 sqm and 2— floor 250 sqm.

Facilities:

Main staircase access + elevator

Open space

ISU Authorization

Alarm system/ventilation

Own parking of the property

Own thermal power plant

There's a basement too