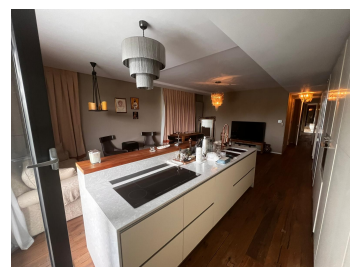


## Baneasa

## Apartment for Rent

### CARACTERISTICS

- ▶ **AREA:** Baneasa
- ▶ **Built surface:** 400 sqm
- ▶ **No. of Bedrooms:** 4
- ▶ **No. of Rooms:** 6
- ▶ **No. of Bathrooms:** 6
- ▶ **Parking places:** 2
- ▶ **Floor:** 5
- ▶ **Maximum height:** S+P+5E



### Layout

#### Description of the 2 apartments:

Beautiful and elegant apartment divided in:

2 living room + dining room;

2 kitchen,

4 bedrooms;

6 bathrooms;

dressing rooms;

shared terrace;

sauna;

2 underground parking places.

Each apartment is divided in 3 rooms, and both of them are located on the 5th floor.

The penthouses are sharing one amazing terrace with view over the park.

DESCRIPTION

The 2 penthouses offered for rent are situated in a beautiful compound which offers security and quite, having around the forest and some great security systems. It is easily accessible both by car and buses (the bus station is right in front of the building). These are connected to important points of the capital: Pipera subway, Piata Presei Libere, Montreal Square, Charles de Gaulle Square, Dorobantilor Square, Romana Square and Aurel Vlaicu International Airport. In the immediate vicinity is the largest shopping center in Romania, where you can shop at will at Metro, Carrefour, Media Galaxy, Mobexpert, Ikea, Bricostore or Baneasa Shopping City. In the area there are countless renowned clubs, fitness rooms, kindergartens and restaurants as well as the Mark Twain International School and the American School, and Henri Coanda and Aurel Vlaicu International Airports are a few minutes away by car.

Amenities and finishes:

- large and bright rooms;
- fully furnished walking dressings;
- fully furnished and equipped kitchen;
- quality appliances;
- fitted sauna;
- good quality of materials;
- big terrace;

5,900 EUR

0.06 BITCOIN

1.60 ETHEREUM