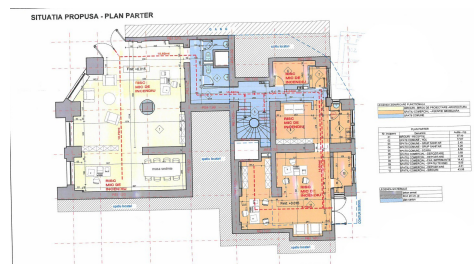
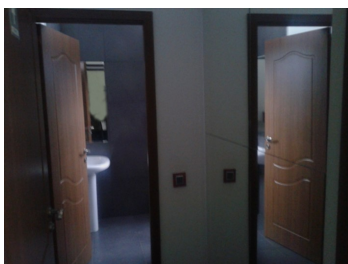


Unirii

Commercial Spaces for Rent

CARACTERISTICS

- ▶ **AREA:** Unirii
- ▶ **Usable surface:** 570 sqm
- ▶ **Maximum height:** S+P+M



DESCRIPTION

The commercial space is situated on Unirii Boulevard benefiting of a great pedestrian and car traffic.

Facilities:

- arranged;
- good pedestrian and car traffic;
- 2 entrances front one and rear one;
- own central heating;

Surfaces:

Total usable area: 570 sqm
Basement: 96 sqm
Ground Floor: 205 sqm
Mezzanine: 269 sqm

10,000 EUR + VAT

0.10 BITCOIN + VAT

3.02 ETHEREUM + VAT