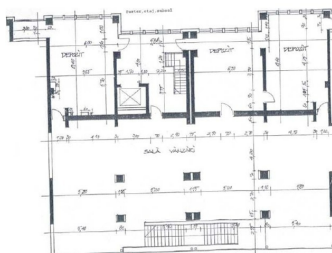
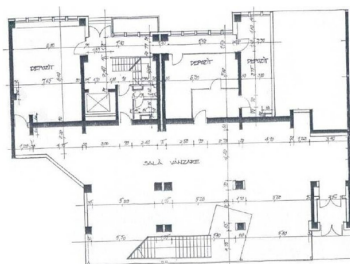


## Ion Mihalache Blvd

## Commercial Spaces for Rent

### CHARACTERISTICS

- ▶ **AREA:** Ion Mihalache Blvd
- ▶ **Usable surface:** 1044 sqm
- ▶ **Maximum height:** S+P+1
- ▶ **Showcase:** 25



### Layout

Total usable [area:1,044](#) sqm

Basement: 144 sqm

Ground floor: 413 sqm

1st Floor: 487 sqm

### DESCRIPTION

The space is located on Ion Mihalache Boulevard, benefiting from maximum visibility, car and pedestrian traffic. The space is arranged on B + GF + 1, with an opening of 25 m.

#### Facilities:

- own central
- supply access
- The space is suitable for supermarket, medical clinic, gym, showroom;

11,000 EUR + VAT

0.11 BITCOIN + VAT

3.33 ETHEREUM + VAT