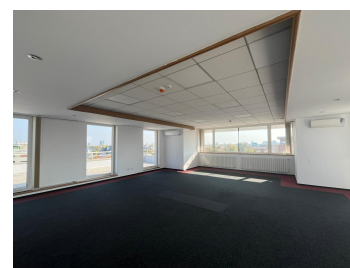


## Aviatorilor

### CARACTERISTICS

- ▶ **AREA:** Aviatorilor
- ▶ **Usable surface:** 930 sqm
- ▶ **Floor:** 3, 4, 5
- ▶ **Maximum height:** D+P+5E
- ▶ **Balconies :** 2



### FINISHES/EQUIPMENT

- ▶ **Others:** AC, Faience, Insulated Windows , Sandstone, Parquet, Heating System

### DESCRIPTION

The building is located in the immediate vicinity of Charles de Gaulles Square, several important institutions, including banking centers, museums, hospitals and the metro station and Herastrau Park.

Facilities:

Reception;

Brand new central heating;

Elevator;

False ceiling;

Network voice/data

Parking lot in semi-basement: 100 euro/place + VAT

3rd Floor: 420 sqm

Floor 4: 380 sqm + 61 sqm terrace

Floor 5: 130 sqm + 266 sqm terrace

Terrace 266 sqm: 3 Euro/sqm/month + VAT

Maintenance: 3 Euro/sqm/month + VAT

18 EUR sqm

0.01 ETHEREUM sqm