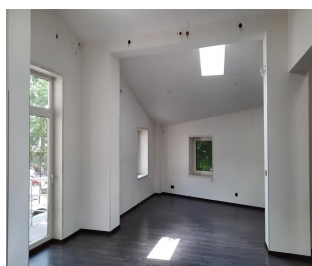


Dacia

Commercial Spaces for Rent

CARACTERISTICS

- ▶ **AREA:** Dacia
- ▶ **Usable surface:** 293.55 sqm
- ▶ **Built surface:** 375.75 sqm
- ▶ **Land Surface:** 164 sqm
- ▶ **Construction year:** 1930
- ▶ **Maximum height:** S+P+E+M



Layout

Built area: 375.75 sqm

Land plot: 164 sqm

Usable area: 293.55 sqm

Basement: 27.02 sqm

Ground floor: 148.67 sqm

1st Floor: 91.84 sqm

Attic: 25.82 sqm

DESCRIPTION

The building offered for rent is situated in the center of Bucharest in Mihai Eminescu area benefiting of an exceptional location and exposure. It was built in 1930 and rehabilitated and consolidated in 2003.

Facilities:

- the building is perfectly suitable for offices, commercial and medical center;
- toilets on each floor;

- 2 central heating;

4,200 EUR

0.04 BITCOIN

1.38 ETHEREUM