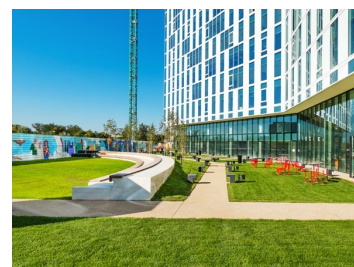
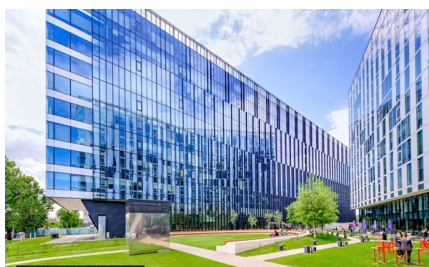
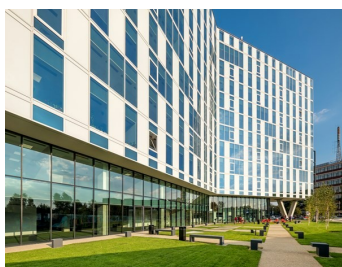


Politehnica

CARACTERISTICS

- ▶ **AREA:** Politehnica
- ▶ **Usable surface:** 3510 sqm
- ▶ **Floor:** 9, 10
- ▶ **Maximum height:** 2S+P+10E



Layout

Building: 2 B+GF+10F (4 buildings)

Available for rent:

9th and 10th floor: 1.755 sqm/ level;

parking plots: 120 Euro + VAT / place

maintenance: 4.8 Euro/ sqm/ month + VAT

Available: May or June 2025

DESCRIPTION

The office buildings are located at the intersection of two main thoroughfares of the city, former boulevard Vasile Milea and Iuliu Maniu, benefiting from quick and easy access to the Basarab Bridge. The location is near the Politehnica metro station.

Facilities:

- green building
- HVAC
- Voice cabling + data
- Curtain wall with sun glass protection
- Building Management System
- Raised floor

- CCTV
- high speed and capacity elevators
- Suspended ceiling
- fire detention system

16.50 EUR sqm + VAT

0.01 ETHEREUM sqm + VAT