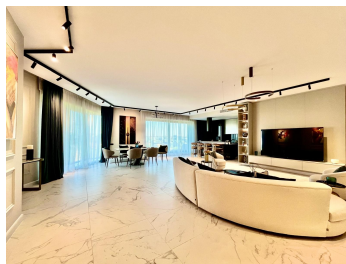


## Floreasca

## Apartment for Rent

### CARACTERISTICS

- ▶ **AREA:** Floreasca
- ▶ **Usable surface:** 320 sqm
- ▶ **Built surface:** 350 sqm
- ▶ **No. of Bedrooms:** 4
- ▶ **No. of Rooms:** 6
- ▶ **No. of Bathrooms:** 4
- ▶ **Parking places:** 3
- ▶ **Floor:** 10
- ▶ **Construction year:** 2023
- ▶ **Maximum height:** S+P+20E



### DESCRIPTION

This amazing apartment has an impressive Tei Lake and Verdi Park view. It is located in a highly desirable area, being close to all the amenities you need for a relaxed yet productive lifestyle: Pescariu Sports & Spa, Promenada Mall, best restaurants and services in the northern part of the capital and the Floreasca-Aviatiei-Pipera business area.

This designer residence enjoys the perfect combination between the best furniture, lighting, appliances and finishes. Underfloor heating. Hidden in ceiling cooling. Efficient green building.

It has an open space 67 Sqm living+ kitchen area, an office and guest bedroom with views over Verdi Park.

It has a 25 sqm terrace.

It benefits of 3 underground parking spaces and 2 storage spaces on the corridor.

6,500 EUR + VAT

0.07 BITCOIN + VAT

3.30 ETHEREUM + VAT