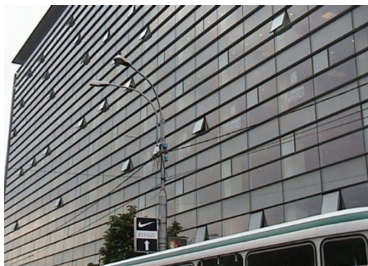


Calea Victoriei

CHARACTERISTICS

- ▶ **AREA:** Calea Victoriei
- ▶ **Usable surface:** 620 sqm
- ▶ **Parking places:** 3
- ▶ **Floor:** Et.3
- ▶ **Maximum height:** 2S+P+10E



DESCRIPTION

The building is located just a few minutes from Victoriei Square, the economic and financial center of Bucharest, having as neighbors Calea Victoriei and Lascar Catargiu Boulevard.

Facilities:

- HVAC; air conditioning system
- access control system
- video monitoring system and security services
- 4 elevators
- smoke/ heat detectors
- suspended ceiling with built-in lights
- raised floor
- carpet; building management system;
- 3 places for outside accommodation
– 150 €/ place/ month + VAT
- storage space: 7 €/sqm/month + VAT
- maintenance: 5.6 €/sqm/month + VAT
- Floor 3: 620 sqm
- Add on factor: ~ 7%

22 EUR sqm + VAT

0.01 ETHEREUM sqm + VAT