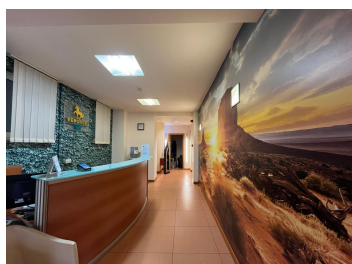


Herastrau

CARACTERISTICS

- ▶ **AREA:** Herastrau
- ▶ **No. of Rooms:** 12
- ▶ **No. of Bathrooms:** 5
- ▶ **Parking places:** 4
- ▶ **Floor:** 1
- ▶ **Balconies :** 3



FINISHES/EQUIPMENT

- ▶ **Others:** AC, Heating System, Internet and Voice Connection , Insulated Windows , Faience, Sandstone

DESCRIPTION

The office building is situated in Northern side of Bucharest very close to Herastrau Park and at 6 minutes distance from Aurel Vlaicu subway station. The location allows easy access to DN1, Baneasa area, the International Airport and to city's center.

Facilities:

elevator

own central heating

modern amenities

air conditioning

parking places

1st apartment: 9 rooms, 4 bathrooms, kitchen, 2 balconies, 3 parking places;

2nd apartment: 3 rooms, bathrooms, kitchen, 1 balcony, 1 parking place;