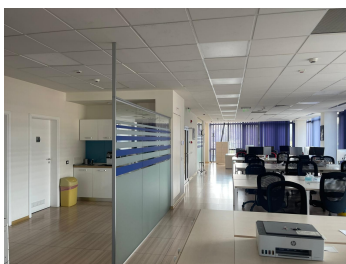
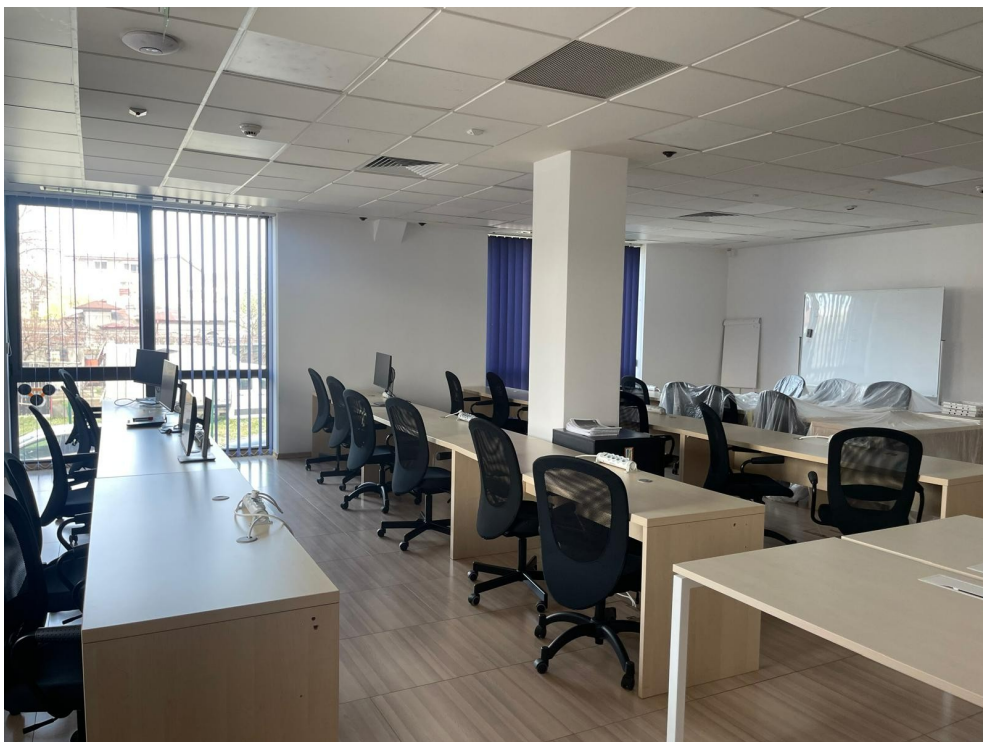


## Bucurestii Noi

### CARACTERISTICS

- ▶ **AREA:** Bucurestii Noi
- ▶ **Usable surface:** 1335.58 sqm
- ▶ **Maximum height:** S+P+3E+Terasa



### Layout

Usable area: 1.335.58 sqm

Terrace: 229.17 sqm

Land plot: 402 sqm + parking 361 sqm

Basement: 2 conference rooms, central heating, archive, server room, kitchen, sanitary groups: 227 sqm

Ground floor: reception, office spaces, sanitary groups, kitchenette: 255.77 sqm

1st Floor: office spaces, sanitary groups, kitchenette: 286 sqm

2nd Floor: office spaces, sanitary groups, kitchenette: 284,56 sqm

3rd Floor: office spaces, sanitary groups,

Kitchenette: 282.25 sqm

Terrace: 229.17 sqm

DESCRIPTION

The building is located in the North area, near Bazilescu Park and Constanta Bridge, benefiting from easy access to all areas of interest of the city. Jiului Metro Station a few minutes away.

- Facilities:
- HVAC heating system
  - High flooring
  - Alarm system
  - Elevator
  - Generator
  - Kitchenette and toilets on each floor

22,000 EUR + VAT

0.30 BITCOIN + VAT

8.82 ETHEREUM + VAT