

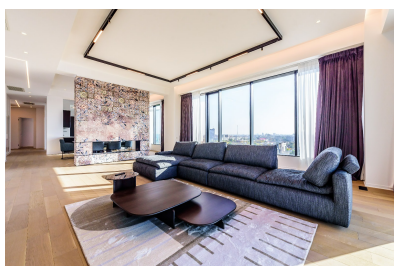
Floreasca

Apartment for Rent

5 rooms

CARACTERISTICS

- ▶ **AREA:** Floreasca
- ▶ **Usable surface:** 257 sqm
- ▶ **Built surface:** 311.8 sqm
- ▶ **No. of Bedrooms:** 4
- ▶ **No. of Rooms:** 5
- ▶ **No. of Bathrooms:** 5
- ▶ **Parking places:** 2
- ▶ **Floor:** 14
- ▶ **Construction year:** 2021
- ▶ **Maximum height:** S+P+18E



FINISHES/EQUIPMENT

- ▶ **Furniture:** Furnished, With Utilities
- ▶ **Others:** AC, Heating System, Elevator, Faience, Sandstone, Parquet, Insulated Windows, Garage

DESCRIPTION

The penthouse is located on the 14th floor of a building from 2021, located in the Floreasca area, offering access to numerous points of interest.

In the vicinity there are Floreasca Park, Primaverii, Calea Floreasca, Floreasca Lake, Dorobanti Square and Promenada Mall.

Description:

Penthouse with 4 bedrooms and terraces, located in an exclusive complex in the area of Mircea Eliade Boulevard – Floreasca. This location benefits from quick access to Floreasca Park, offering an ideal setting for an urban lifestyle, but relaxing.

Apartment details:

- Total usable area: 257 sqm.
- Floor: 14, offering spectacular views over the city.
- Partitioning: the apartment consists of an entrance hall, a generous living room, a modern open space kitchen, bathrooms, terraces with a total area of 18.9 sqm and 4 spacious bedrooms.

The interior partitions are designed to provide multiple storage areas, maximizing the comfort of the residents.

Finishes and facilities:

- Premium finishes: the apartment is completely new and benefits from high quality finishes, offering a stylish and comfortable environment.
- Furniture and home appliances: tastefully furnished and equipped with state-of-the-art home appliances for increased comfort.

8,500 EUR + VAT

0.09 BITCOIN + VAT

3.70 ETHEREUM + VAT