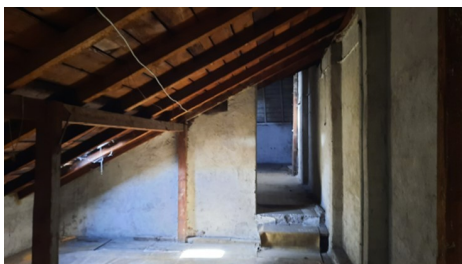
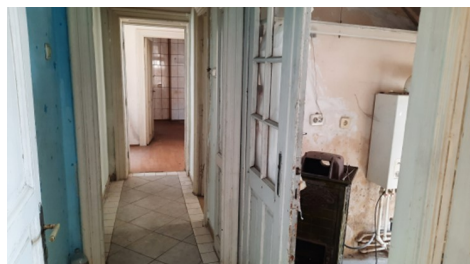


## Amzei Square

## Commercial Spaces

### CARACTERISTICS

- ▶ **AREA:** Amzei Square
- ▶ **Usable surface:** 400 sqm
- ▶ **Land Surface:** 200 sqm



### DESCRIPTION

The building is historical monument being located in Romana Square area, only a few minutes away from Victoriei Square or Universitate Square, in an area with numerous buildings with beautiful architecture, many of them renovated or under renovation.

Facilities:

The project that is waiting to obtain the authorization involves the development of:

- 494 sqm of commercial spaces and offices;
- consolidation, modernization and remodeling of the roof, transformation of the existing bridge into the attic and interior repartitionment;
- was obtained the opinion from Ministry of Culture.

Footprint: 167 sqm

Useful area: 400 sqm

Land area: 200 sqm

1,190,000 EUR

19.48 BITCOIN

629 ETHEREUM