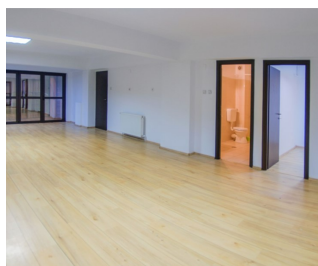


Calea Victoriei

CARACTERISTICS

- ▶ **AREA:** Calea Victoriei
- ▶ **Built surface:** 450 sqm
- ▶ **No. of Rooms:** 12
- ▶ **No. of Bathrooms:** 7
- ▶ **Maximum height:** P+3E



DESCRIPTION

The building is situated very close to Victoriei Square, having easy access to all the important point of interest in the city and to all means of transportation.

The total area: 450 sqm

Ground floor: 2 rooms -64 sqm, 10 sqm, bathroom;

1st Floor: 3 rooms, (39 sqm, 16 sqm, 16 sqm), kitchen, 2 bathrooms;

2nd Floor: 3 rooms (55 sqm, 16 sqm, 13 sqm), 2 bathrooms, kitchen;

3rd Floor: 2 rooms (55 sqm, 10 sqm), 2 bathrooms, kitchen

Facilities:

12 rooms, 7 bathrooms;

1 central heating per level;

air conditioning;

insulated windows;

courtyard 100 sqm

5,500 EUR

0.07 BITCOIN

2.08 ETHEREUM