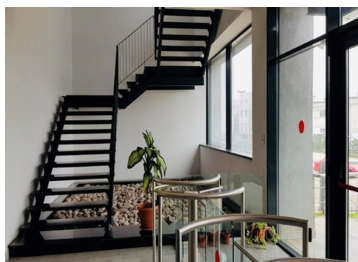
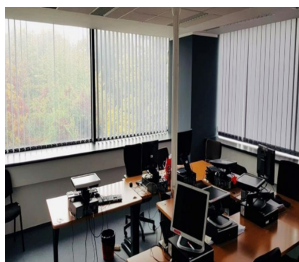


## North

### CARACTERISTICS

- ▶ **AREA:** North
- ▶ **Usable surface:** 6273 sqm
- ▶ **Construction year:** 1985
- ▶ **Maximum height:** S+P+4E



### DESCRIPTION

The office building is located in the northern part of Bucharest, in the Baneasa district. This location offers easy access both from the city center (Pia?a Victoriei, Universitate, Charles de Gaulle) and from Henri Coand? Airport (Otopeni).

The business park benefits from a well-developed public transport infrastructure, with bus and tram stations located approximately 400 meters away, at the intersection of Biharia Street and Aerog?rii Boulevard.

Amenities:

- 2 elevators
- 40 parking spaces
- 2 staircases
- Air conditioning