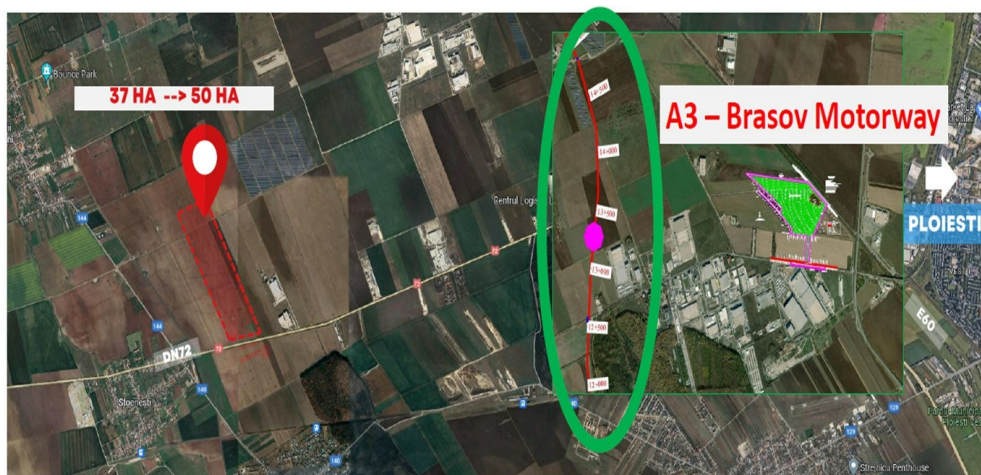


Ploiesti

Land for Sale

CARACTERISTICS

- **AREA:** Ploiesti
- **Usable surface:** 37 sqm
- **POT:** 60
- **CUT:** 2
- **End-use:** Rezidential



DESCRIPTION

The land offered for sale benefits from an approved PUZ for industrial development and provides direct access to the national road DN 72. With an expansion potential of up to 50 ha and an excellent location near the planned highway, the A3 - Brasov location provides easy access to the — motorway making it ideal for logistics or smaller industrial projects.

LAND AREA: 37 Ha with possibility of extension up to 50 Ha

Urban coefficients: POT 60%

CUT max: 2

Maximum height: 20 m

20 EUR sqm

0.01 ETHEREUM sqm