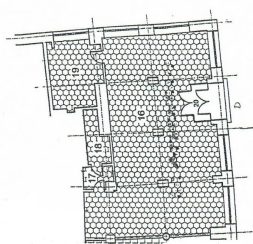
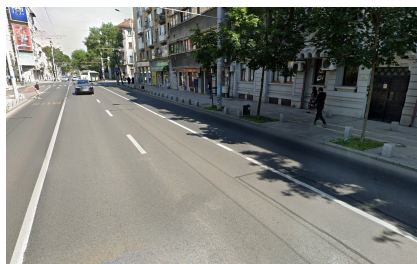


Cismigiu Park

Commercial Spaces

CARACTERISTICS

- ▶ **AREA:** Cismigiu Park
- ▶ **Usable surface:** 149.69 sqm
- ▶ **Land Surface:** 27.37 sqm
- ▶ **Floor:** P



RECAPITULATIE

Camera	Destinație	Suprafata
16	Spatiu comercial	119.03
17	Camera agrotate	3.45
18	Camera fig	5.61
19	Depozit marfuri	18.36
20	SAS	3.24
Total sup. utila		149.69

DESCRIPTION

The space is located on Kogalniceanu Boulevard, close to Cismigiu Park, benefiting from a very good visibility, pedestrian and car traffic.

Related land: 27,37 sqm

The space is disposed on the ground floor

Facilities:

- opening at 2 streets
- arranged
- all utilities

The space is rented for 10 years;

The building is included in U3;

500,000 EUR

4.87 BITCOIN

151.32 ETHEREUM