

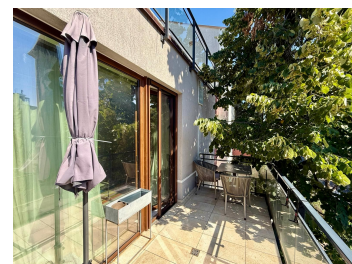
Baneasa

Apartment for Rent

3 rooms

CARACTERISTICS

- ▶ **AREA:** Baneasa
- ▶ **Usable surface:** 76.15 sqm
- ▶ **No. of Bedrooms:** 2
- ▶ **No. of Rooms:** 3
- ▶ **No. of Bathrooms:** 2
- ▶ **Parking places:** 2
- ▶ **Floor:** 2
- ▶ **Construction year:** 2014
- ▶ **Balconies :** 1



FINISHES/EQUIPMENT

- ▶ **Others:** Video Surveillance , AC, Heating System, Insulated Windows , Faience, Sandstone, Parquet

DESCRIPTION

The apartment is located on the second floor of a residential building from 2014, near Herastrau Park, with access to kindergartens, schools, restaurants, quick access to the center, airport and other points of interest.

Description:

Elegant apartment with 2 bedrooms and terrace, located in a boutique building with only 12 apartments located in one of the most appreciated areas of the capital: Baneasa - Ficusului. Excellent location, near Herastrau Park, the building offers quick access to green areas, restaurants and quality urban facilities.

Main features:

- total usable area: 76,15 sqm;
 - partitioning: access hall, bright and spacious living room, modern open kitchen, 2 bedrooms, 2 bathrooms and a terrace of 7.6 sqm, ideal for relaxation;
 - the storage spaces were designed efficiently, for maximum comfort.
- Quality and comfort:
- finishes: premium materials, carefully chosen for a refined design and a warm atmosphere;
 - furniture and equipment: the apartment is fully furnished with modern parts and equipped with state-of-the-art household appliances;
 - 2 parking places in the private yard.

1,300 EUR

0.01 BITCOIN