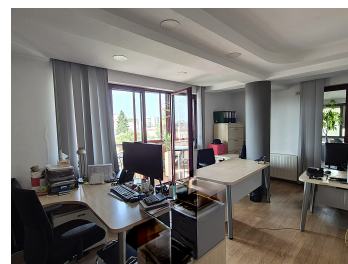
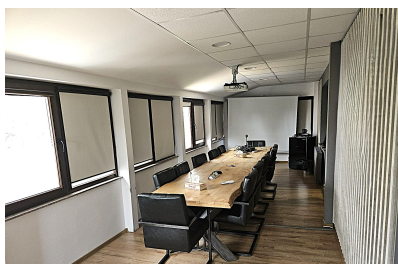


## Panduri

### CARACTERISTICS

- ▶ **AREA:** Panduri
- ▶ **Usable surface:** 650 sqm
- ▶ **Construction year:** 2001



### FINISHES/EQUIPMENT

- ▶ **Others:** AC, Heating System, Sandstone, Parquet, Garage, Insulated Windows , Faience

### DESCRIPTION

The building is located near the Palace of Parliament and Marriott Hotel with easy access to the means of transport.

Facilities:

- air conditioning
- central heating
- good quality finishes
- server room
- toilets on each floor
- kitchen

Usable area: 650 sqm

Basement: garage 42 sqm, technical rooms, 3 storage spaces;

Ground floor: 3 rooms (20 sqm, 30 sqm, 30 sqm, reception, server, bathroom;

Floor 1: 3 rooms (20 sqm, 21 sqm, 33 sqm, kitchen, 2 bathrooms, balcony;

Floor 2: 3 rooms (22 sqm, 24 sqm, 57 sqm, 2 bathrooms, terrace;

Floor 3: 4 rooms (17 sqm, 24 sqm, 25 sqm, 18 sqm) bathroom, terrace.

6,900 EUR + VAT

0.07 BITCOIN + VAT

2.29 ETHEREUM + VAT