

Ion Mihalache Blvd

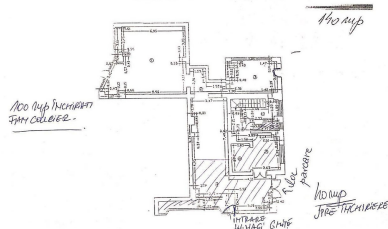
Commercial Spaces for Rent

CHARACTERISTICS

- ▶ **AREA:** Ion Mihalache Blvd
- ▶ **Usable surface:** 140 sqm
- ▶ **Parking places:** 2
- ▶ **Floor:** P



- Plan Ground Floor



FINISHES/EQUIPMENT

- ▶ **Others:** AC

DESCRIPTION

The commercial space is located on Ion Mihalache Boulevard between the intersection of Averescu Boulevard and Piata 7 Noiembrie. The space is on the ground floor.

Facilities:

- opening at 2 streets;
- 2 parking spaces above ground
- air conditioning system + 2 optional air conditioning;

3,950 EUR

0.07 BITCOIN

2.21 ETHEREUM