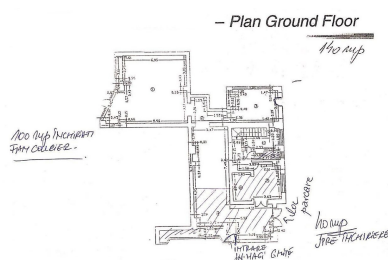
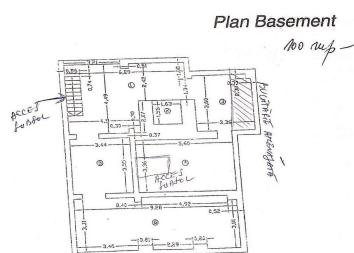


Ion Mihalache Blvd

Commercial Spaces for Rent

CARACTERISTICS

- ▶ **AREA:** Ion Mihalache Blvd
- ▶ **Usable surface:** 241 sqm
- ▶ **Parking places:** 2
- ▶ **Floor:** S+P



FINISHES/EQUIPMENT

- ▶ **Others:** AC

DESCRIPTION

The commercial space is located on Ion Mihalache Boulevard between the intersection of Averescu Boulevard and Piata 7 Noiembrie. The space is on the ground floor.

Facilities:

- opening at 2 streets;
- 2 parking spaces above ground
- air conditioning system + 2 optional air conditioning;

Ground floor 140 sqm

Basement: 101 sqm

4,550 EUR

0.08 BITCOIN

2.71 ETHEREUM