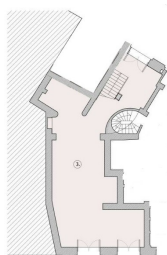


Cismigiu

Commercial Spaces for Rent

CARACTERISTICS

- ▶ **AREA:** Cismigiu
- ▶ **Usable surface:** 129 sqm
- ▶ **Floor:** P



DESCRIPTION

The commercial space is located on Regina Elisabeta Boulevard, opposite to McDonald's, benefiting from a position with exceptional visibility.

The space is arranged on the ground floor.

Facilities:

- pedestrian and intense car traffic
- 2 front entrances;
- electricity and water;
- thermal power plant;
- sanitary group;
- rear entrance;

Available: immediately;

4,600 EUR + VAT

0.06 BITCOIN + VAT

1.74 ETHEREUM + VAT