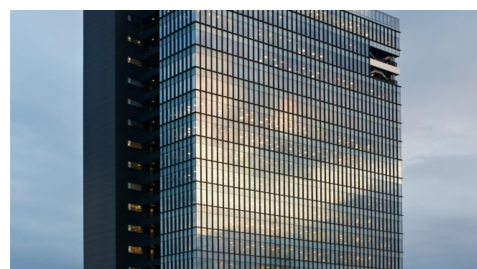
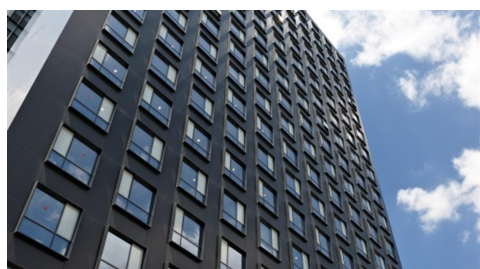


Barbu Vacarescu

Offices for Rent

CARACTERISTICS

- ▶ **AREA:** Barbu Vacarescu
- ▶ **Usable surface:** 2537 sqm
- ▶ **Parking places:** 316
- ▶ **Floor:** Parter, Et. 9, Et.17
- ▶ **Maximum height:** 3S+P+20E
- ▶ **Subdivision:** open space



FINISHES/EQUIPMENT

- ▶ **Others:** A/CLiftCentrala terminaConexiune/retea date voce internetGresieFaiantaGeamuri termopan

DESCRIPTION

The building is situated in the northern area of Bucharest, very close to Barbu Vacarescu Boulevard.

Facilities:

- open space/level
- conditioning system with fans
- against-fire system; sprinklers system;

- voice-data
 - TVCI surveillance system,
 - 24h/24
 - technical alarm systems, monitoring,
 - access control;
 - heating;
 - suspended ceiling, raised floors
 - back up generator
 - building's administration
 - 6 panoramic elevators; 1 service elevator; 1 elevator for the underground parking, ground floor and 1st floor.
- Available surfaces:
Ground floor: 137 sqm
9th floor: 1,200 sqm
17th floor: 1,200 sqm
4.5 €/sqm/month + VAT - Maintenance

16 EUR sqm + VAT