

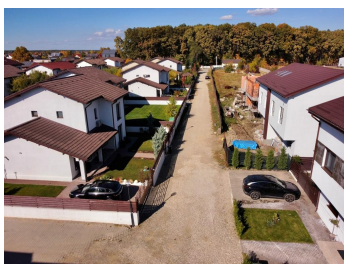
Corbeanca

House for Sale

4 rooms

CARACTERISTICS

- ▶ **AREA:** Corbeanca
- ▶ **Usable surface:** 230 sqm
- ▶ **Built surface:** 265 sqm
- ▶ **Land Surface:** 290 sqm
- ▶ **No. of Bedrooms:** 3
- ▶ **No. of Rooms:** 4
- ▶ **No. of Bathrooms:** 3
- ▶ **Construction year:** 2022
- ▶ **Maximum height:** P+1+M



DESCRIPTION

The complex is located at the edge of the forest, being a favorable environment for those who want to live in an unpolished and quiet area, away from metropolitan agitation.

Tamasi Forest, Corbeanca Mall, A0, DN1, Lidl, Penny, Carrefour, Hornbach, Therme, private and state schools and kindergartens.

The houses are GF+1+A, the structure is made of reinforced concrete frames, with the slab over the 1st floor.

The houses are individually coupled (they do not have a common wall, they do not have common foundations, common structure, etc.).

The land area is 290 sqm.

The footprint of the house is 80 sqm.

The usable area p+1 is 134 sqm, and in the attic the usable area is 69 sqm.

The interior and exterior finishes are imported materials of the highest quality and can be customized at the buyer's choice.

Courtyard arranged with turf type roll and sprinkler system.

265,000 EUR

2.76 BITCOIN

71.68 ETHEREUM