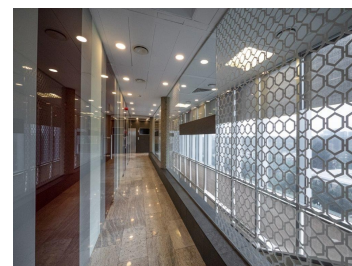
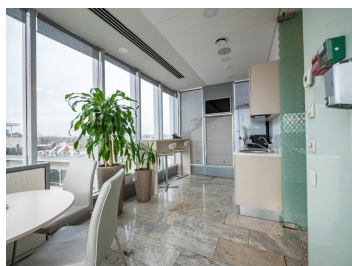


Aviatorilor

CARACTERISTICS

- ▶ **AREA:** Aviatorilor
- ▶ **Usable surface:** 572.27 sqm
- ▶ **Floor:** Et.2, Et. 5
- ▶ **Maximum height:** S+P+5E



Layout

2nd Floor: 363.27 sqm

5th Floor: 209 sqm

Maintenance: 8 Euro/ sqm/ month + VAT

FINISHES/EQUIPMENT

- ▶ **Others:** AC, Heating System, Internet and Voice Connection , TV Cable, Elevator, Insulated Windows , Sandstone, Faience, Parquet, Garage

DESCRIPTION

Office spaces for rent situated in northern area, close to Herastrau Park and at only a few minutes distance from the subway station.

Facilities:

- parking places both inside and outside;
- Schindler elevator;
- raised floor carpet, granite;
- lights in the false ceiling
- sanitary groups
- CCTV

21 EUR sqm + VAT

0.01 ETHEREUM sqm + VAT