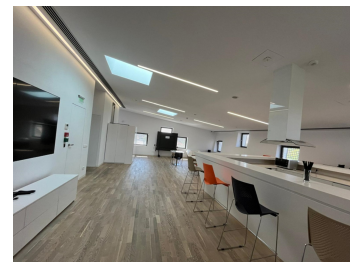
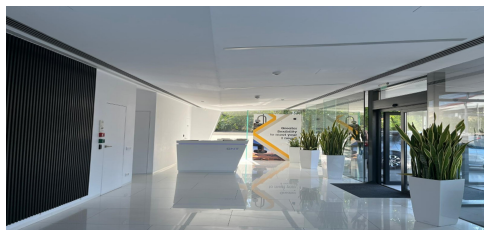


## Mihai Bravu

### CARACTERISTICS

- ▶ **AREA:** Mihai Bravu
- ▶ **Usable surface:** 1183 sqm
- ▶ **Parking places:** 20
- ▶ **Construction year:** 2017



### FINISHES/EQUIPMENT

- ▶ **Others:** Insulated Windows , Faience, Sandstone, Parquet

### DESCRIPTION

The building is located in the immediate vicinity of the Mihai Bravu Metro station, and just a few minutes away from Tineretului Park. The architecture was designed in the shape of a crystal, with multiple facets. The perforated panels in front of the windows serve as sunshades, resulting in energy savings. The construction features staggered half-levels in height, allowing for open-space areas ranging from 150 sqm to 250 sqm on each half-level. To bring this concept to life, we had to suspend the actual working spaces from the central core, which includes the staircase, elevator, and restrooms.

#### Amenities:

High-quality finishes  
Elevator  
Two staircases  
HVAC system  
Hardwood flooring

14,500 EUR + VAT

0.25 BITCOIN + VAT

8.12 ETHEREUM + VAT