

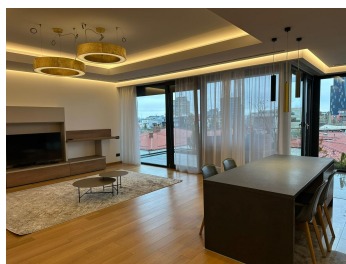
Primaverii

Apartment for Rent

4 rooms

CARACTERISTICS

- ▶ **AREA:** Primaverii
- ▶ **Usable surface:** 200 sqm
- ▶ **No. of Bedrooms:** 3
- ▶ **No. of Rooms:** 4
- ▶ **No. of Bathrooms:** 3
- ▶ **Floor:** 5
- ▶ **Maximum height:** S+P+5E



DESCRIPTION

Premium Apartment for Rent – Prime Residential Location

This premium apartment is located in one of the most exclusive residential areas of the city, surrounded by top amenities, beautiful parks, and prestigious institutions. It features a spacious terrace with a stunning view, perfect for relaxation at any time of day.

Area & Surroundings

The property is just a short walk from:

Bordei Park – a serene green space ideal for walking and jogging

Herăstrău / King Mihai I Park – the largest park in Bucharest, offering lakeside promenades, recreational activities, and popular restaurants

Aviatorilor Metro Station – providing quick access to the city center and business districts

Primăverii Palace – a prestigious cultural landmark open for visits

Excellent nearby schools and high schools, suitable for families

Museums, art galleries, and fine dining restaurants

Amenities & Finishes

high-quality wooden floors

air conditioning

fully equipped kitchen

private parking with automatic door

Apartment Layout

Located on the 5th floor, the apartment offers:

a spacious living room with dining area

3 bright bedrooms

3 modern bathrooms

a terrace with a beautiful view

A stylish, spacious, and perfectly located apartment, ideal for a premium urban lifestyle.

5,600 EUR

0.07 BITCOIN

2.12 ETHEREUM