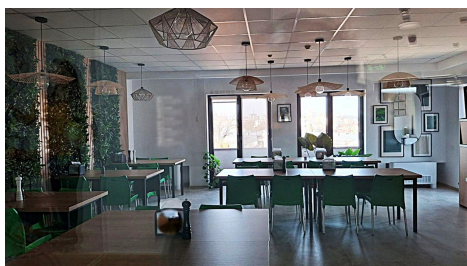
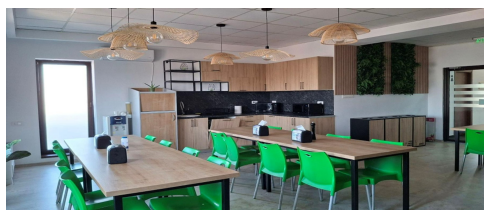


Icoanei Garden

CARACTERISTICS

- ▶ **AREA:** Icoanei Garden
- ▶ **Usable surface:** 2444 sqm
- ▶ **Maximum height:** 2S+P+4E



DESCRIPTION

The building is located in the Gradina Icoanei area, just a few minutes from Piata Romana. It benefits from an exceptional position and excellent access to all areas of the city. A building with open spaces that enjoy natural light.

Facilities:

restrooms
air conditioning
voice and data cabling
security
reception
raised floor

Parking spaces: 22 places - 110 Euro/space/ month

Basement 1: 630 sqm

Basement 2: 630 sqm

Ground floor: 477 sqm

Floors 1, 2, 3: 510 sqm/floor

Floor 4: 437 sqm + 73.5 sqm terrace

Maintenance: 4 Euro/sqm/month + VAT

16 EUR sqm

0.01 ETHEREUM sqm