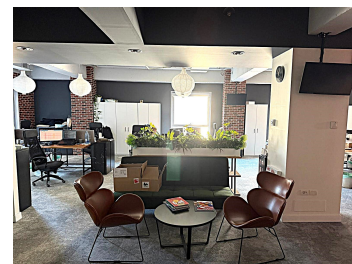
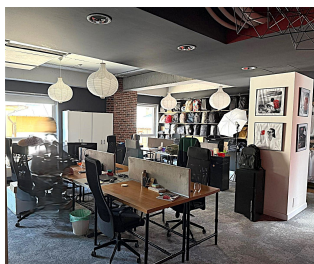


Cismigiu

Offices for Rent

CARACTERISTICS

- ▶ **AREA:** Cismigiu
- ▶ **Usable surface:** 178 sqm
- ▶ **Land Surface:** 733 sqm
- ▶ **Floor:** 1
- ▶ **Construction year:** 2013
- ▶ **Maximum height:** S+P+4E



DESCRIPTION

The office building is situated on Stirbei Voda Boulevard very close to Sala Palatului and Calea Victoriei, at only 10 minutes away from the subway stations Eroilor and Izvor.

Facilities:

- brand new building
- 4 pipes HVAC climatization system
- false ceiling
- antistatic carpet
- fire prevention system
- video- surveillance
- 2 elevators
- parking places 2 underground (100 Euro/ place/ month + VAT)

- service charge: 6 Euro/ sqm/ month + VAT