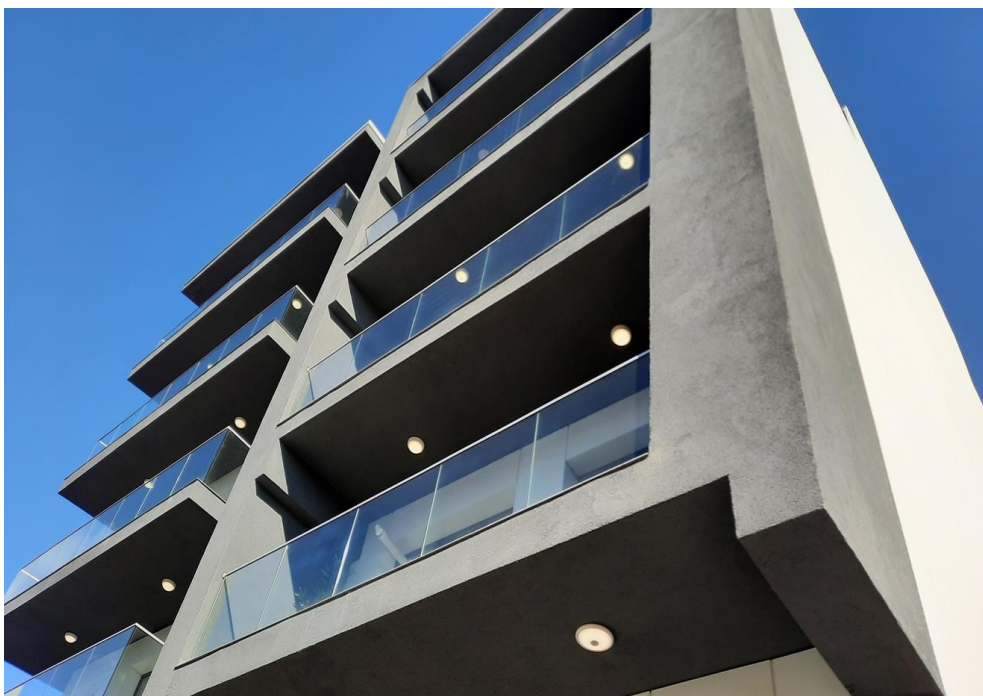


## Calea Vitan

## Commercial Spaces for Rent

### CARACTERISTICS

- ▶ **AREA:** Calea Vitan
- ▶ **Usable surface:** 430 sqm
- ▶ **Maximum height:** S+P



### Layout

Total usable area: 430 sqm

Ground floor usable area: 210 sqm

Basement usable area: 230 sqm

### DESCRIPTION

The commercial space offered for rent is situated on Calea Vitan, in an area with great pedestrian and car traffic. The space is disposed on the ground floor and at semi-basement.

Facilities:

- open space;
- large shopping window on 2 sides;
- arranged;
- 2 wash rooms;
- 4 access doors;
- 2 parking places in the underground;

12 EUR sqm + VAT

0.01 ETHEREUM sqm + VAT