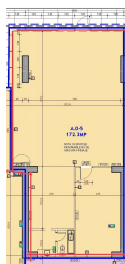
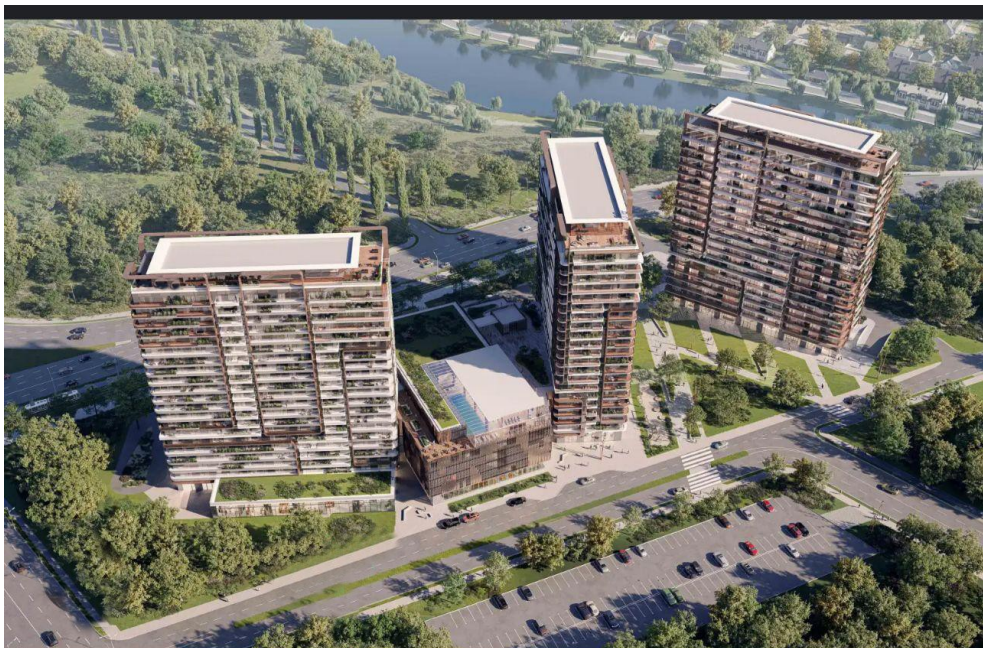


## Pipera

## Commercial Spaces for Rent

### CHARACTERISTICS

- ▶ **AREA:** Pipera
- ▶ **Usable surface:** 172.3 sqm



### DESCRIPTION

The space is located in the Barbu Vîlcu – Fabrica de Glucoză area, with access from Barbu Vîlcu Blvd., Șos. Petricani, and Dimitrie Pompei Blvd., close to the Pipera metro station and numerous office buildings in the northern business district.

The space is situated on the ground floor of a newly constructed building;

- large storefront window;
- street-facing view;
- open-space, shell & core layout;
- electrical, sanitary, and thermal installations, metering;
- restrooms;
- transformer station;
- modern glass façade;
- parking available.

30 EUR sqm + VAT

0.02 ETHEREUM sqm + VAT